



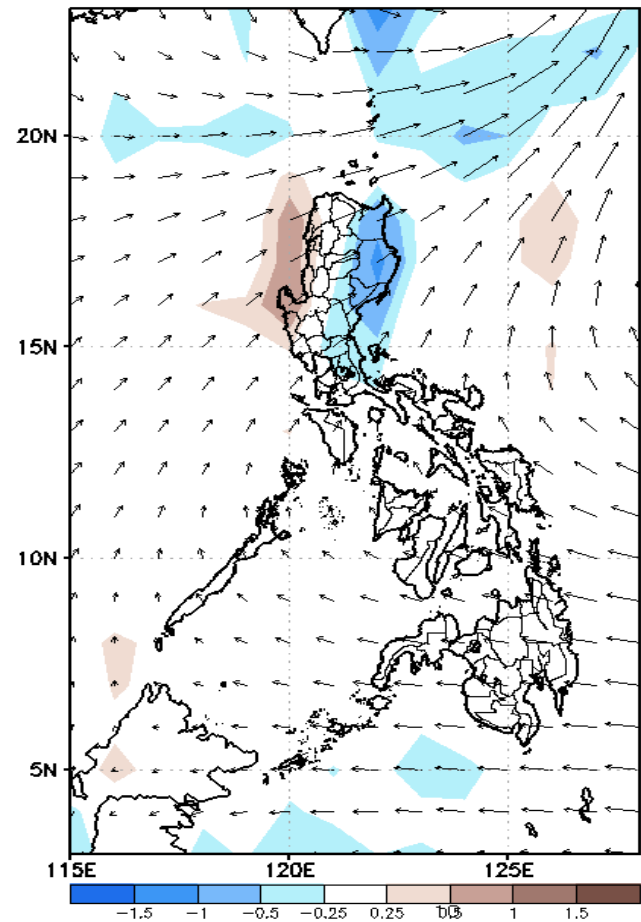
Week 1 & Week 2 Forecast for the Philippines using GEFS Model



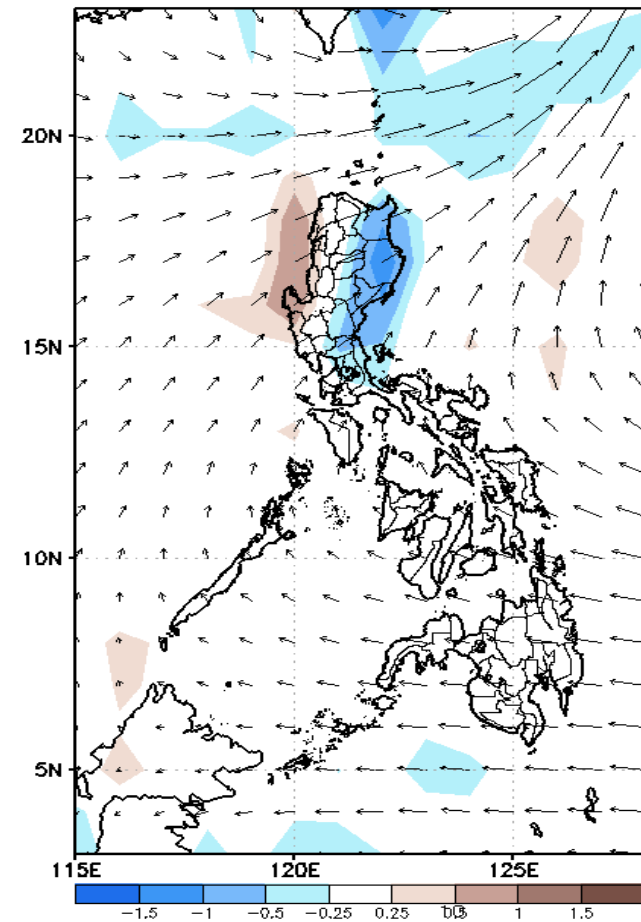
GEFS Week-1 Forecasts: Wind Anomaly Forecast

Week 1: Sep 02-08, 2022

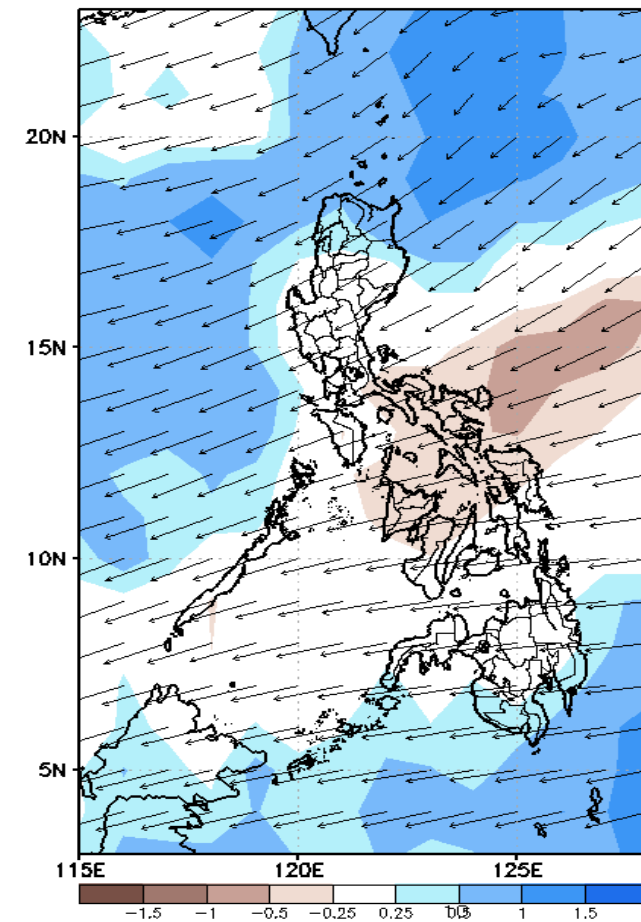
GEFS Week-1 850-hPa Divergence and Wind Anom
Valid: 20220902 - 20220908



GEFS Week-1 700-hPa Divergence and Wind Anom
Valid: 20220902 - 20220908



GEFS Week-1 200-hPa Divergence and Wind Anom
Valid: 20220902 - 20220908

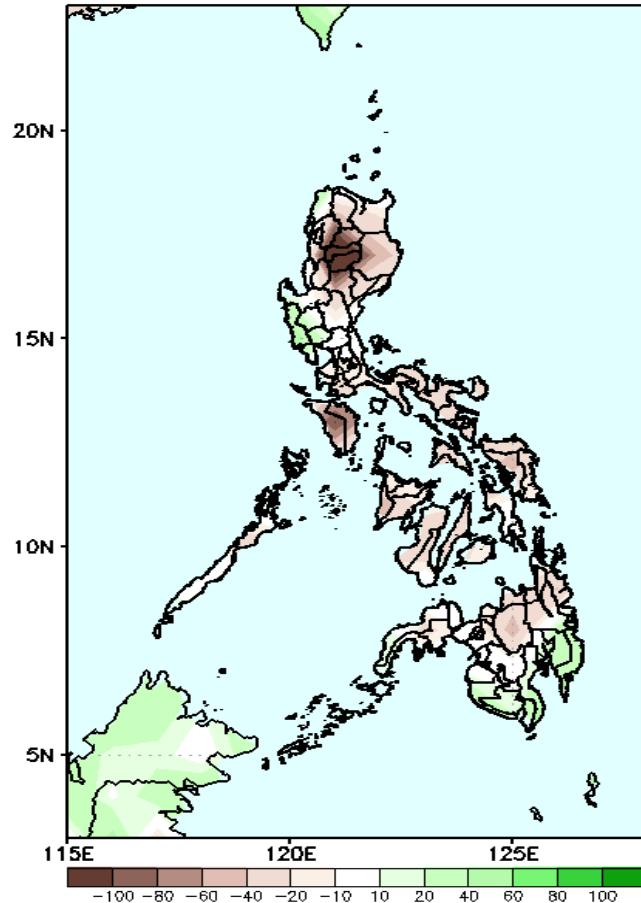


Southwest Monsoon affecting most parts of Luzon while Easterlies Visayas and Mindanao during the forecast period.

Precipitation Anomaly and Exceedance Probability > 25/50 mm

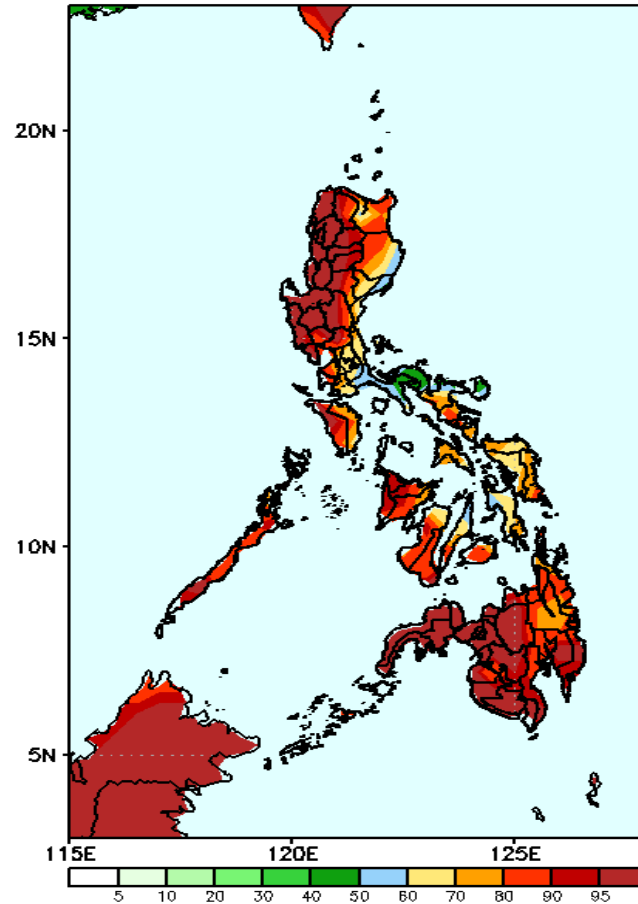
Week 1: Sep 02-08, 2022

GEFS Week-1 Precip Anomaly
Valid: 20220902 - 20220908



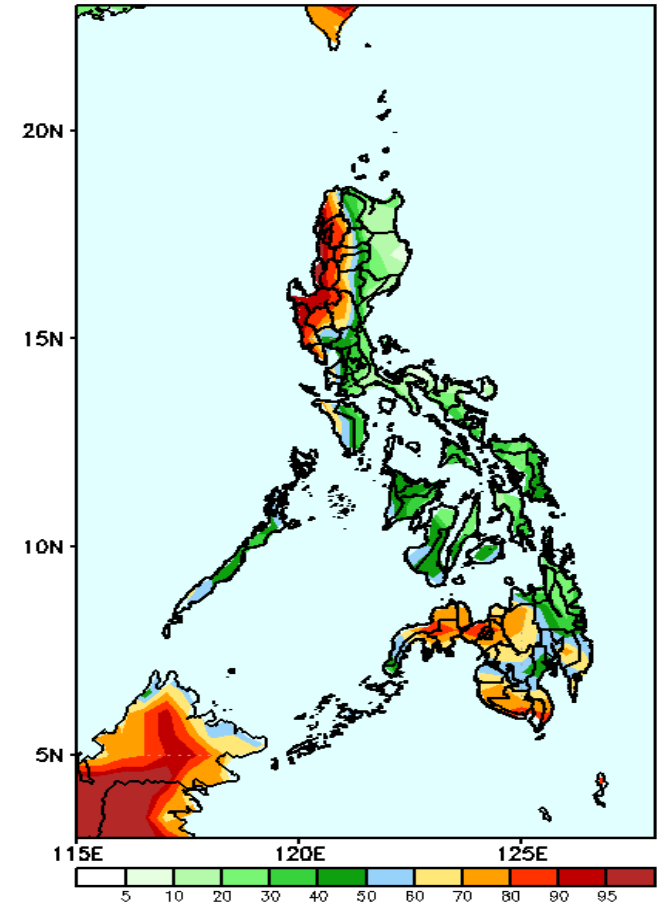
Rainfall deficit of more than 100mm is expected in most parts of Cordillera Region, 20-60mm increase of rainfall in eastern parts of Central Luzon and southern Mindanao and 40-90mm for the rest of the country during the forecast period.

GEFS Week-1 Exceedance Prob. > 25mm
Valid: 20220902 - 20220908



High probability of rainfall to exceed 25mm in most parts of the country during the forecast period.

GEFS Week-1 Exceedance Prob. > 50mm
Valid: 20220902 - 20220908

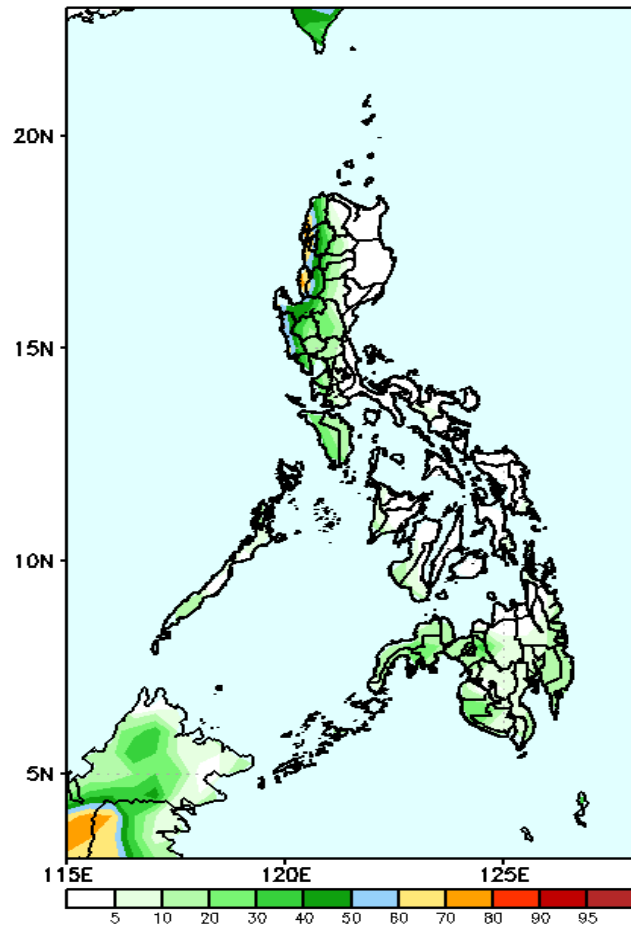


High probability of rainfall to exceed 50mm in western portion of Northern Luzon, most parts of Central Luzon and Mindanao except CARAGA Region while less likely for the rest of the country during the forecast period.

Exceedance Probability > 100/150/200 mm

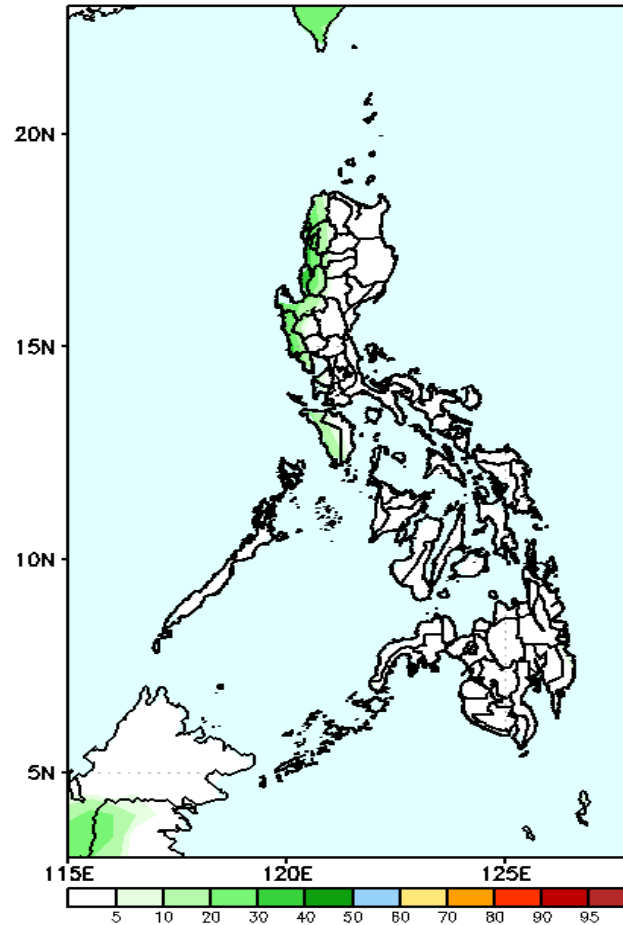
Week 1: Sep 02-08, 2022

GEFS Week-1 Exceedance Prob. > 100mm
Valid: 20220902 - 20220908



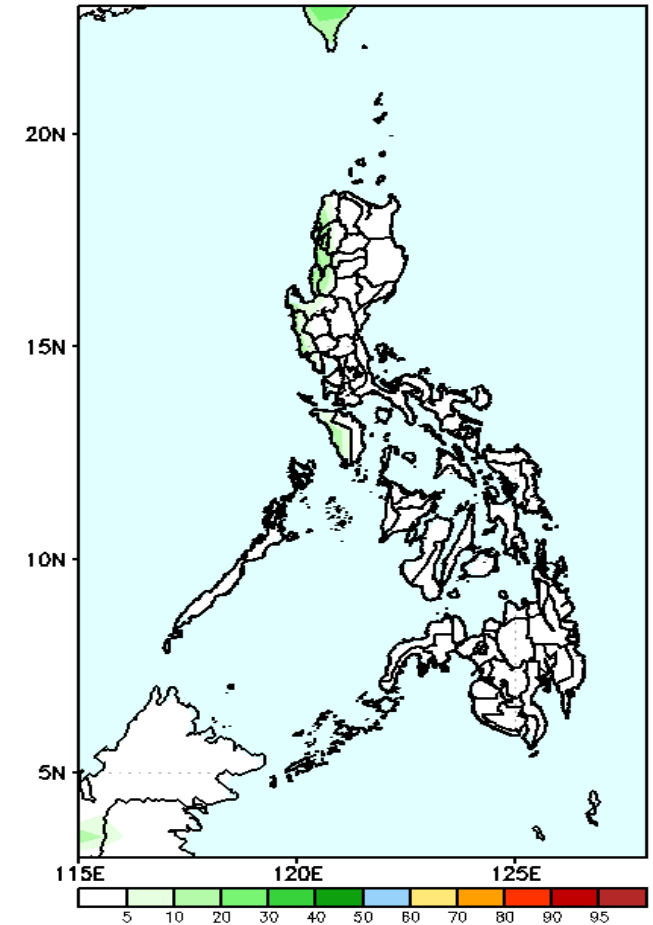
Low probability of rainfall to exceed 100mm in most parts of the country during the forecast period.

GEFS Week-1 Exceedance Prob. > 150mm
Valid: 20220902 - 20220908



Low probability of rainfall to exceed 150mm in most parts of the country during the forecast period.

GEFS Week-1 Exceedance Prob. > 200mm
Valid: 20220902 - 20220908

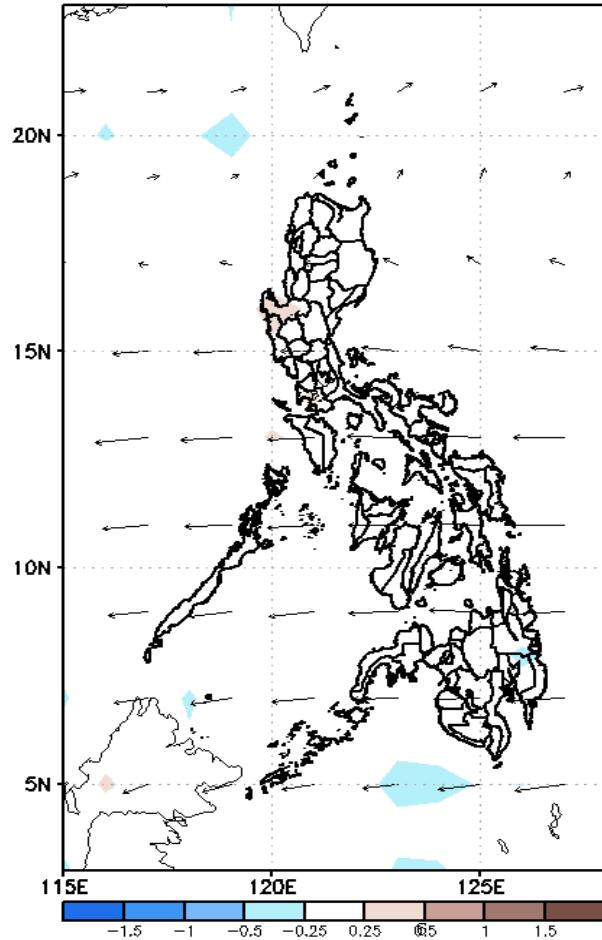


Low probability of rainfall to exceed 200mm in most parts of the country during the forecast period.

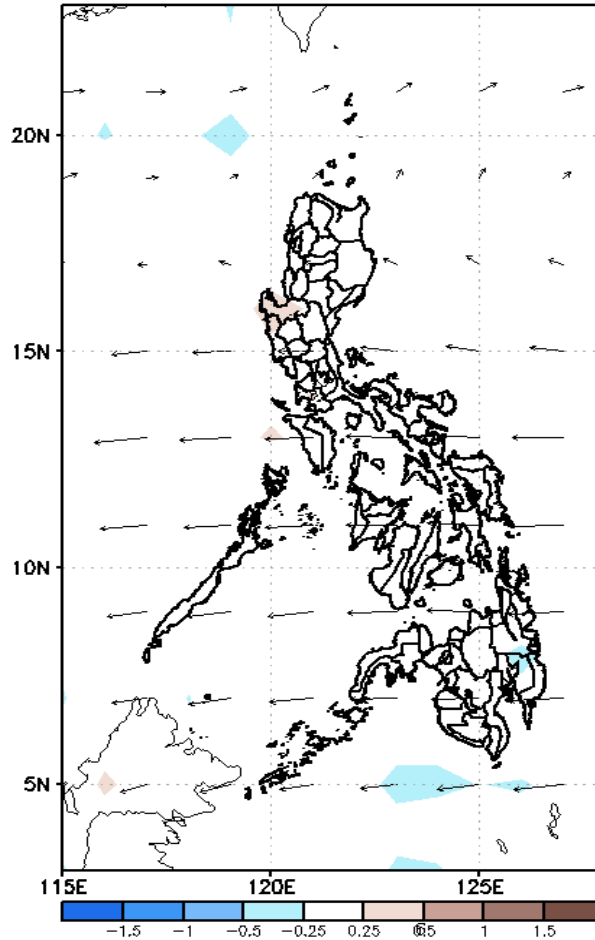
GEFS Week-2 Forecasts: Wind Anomaly Forecast

Week 2: Sep 09-15, 2022

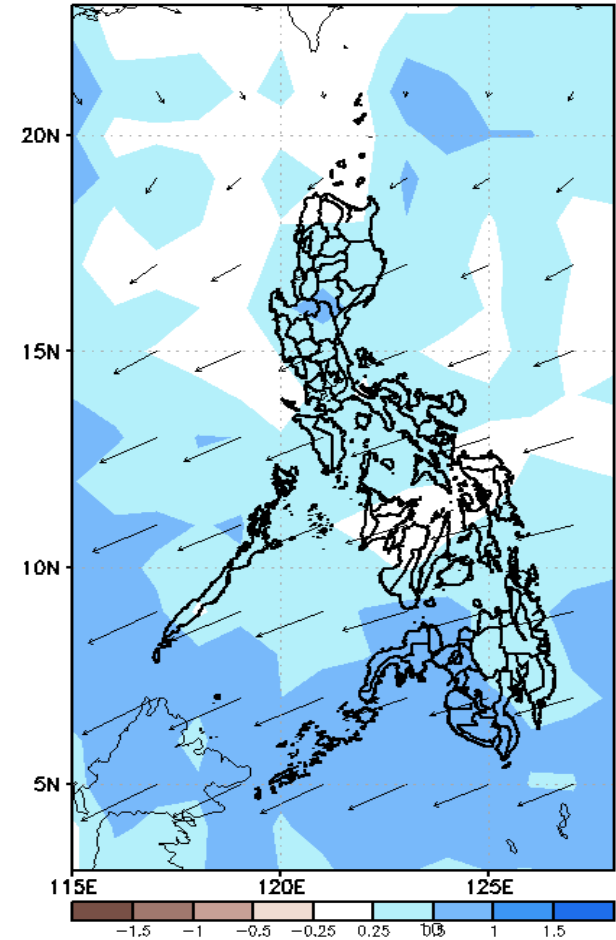
GEFS Week-2 850-hPa Divergence and Wind Anom
Valid: 20220909 - 20220915



GEFS Week-2 700-hPa Divergence and Wind Anom
Valid: 20220909 - 20220915



GEFS week-2 200-hPa Divergence and Wind Anom
Valid: 20220909 - 20220915

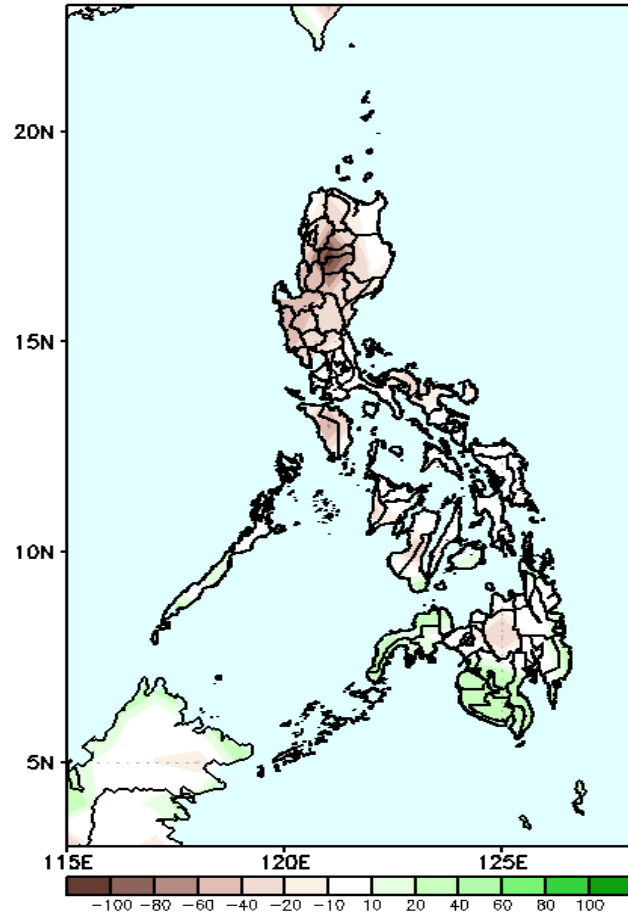


Southwest Monsoon affecting Extreme Northern Luzon while Easterlies the rest of the country during the forecast period.

Precipitation Anomaly and Exceedance Probability > 25/50 mm

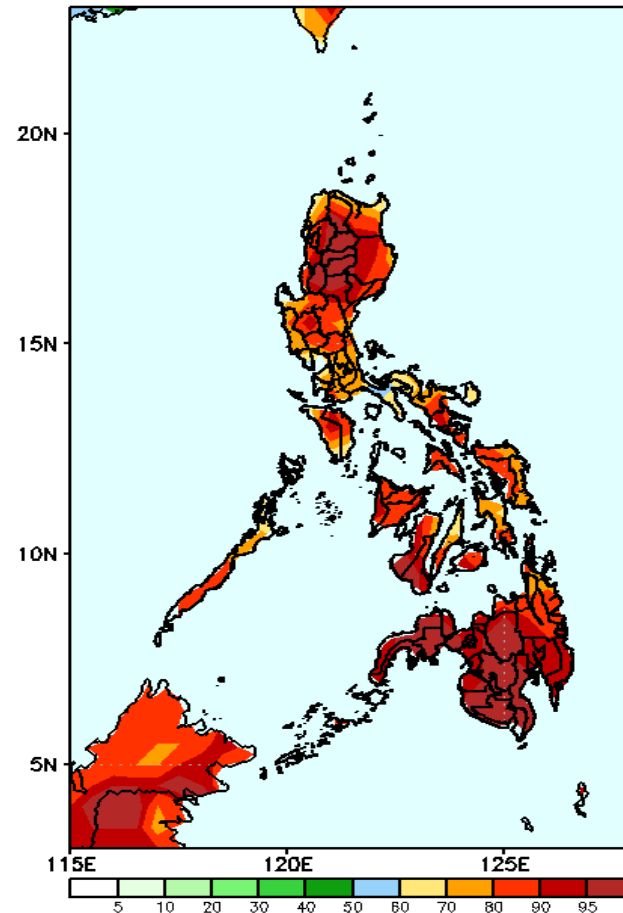
Week 2: Sep 09-15, 2022

GEFS Week-2 Precip Anomaly
Valid: 20220909 - 20220915



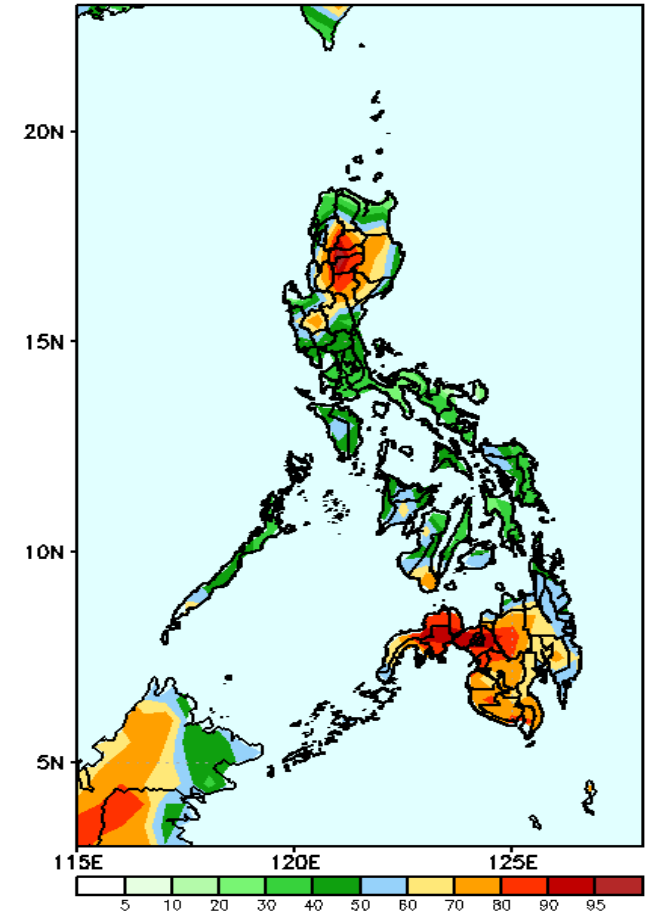
Rainfall deficit of 40-100mm is expected in most parts of the country except in western Mindanao and Davao Region where above normal rainfall is more likely during the forecast period.

GEFS Week-2 Exceedance Prob. > 25mm
Valid: 20220909 - 20220915



High probability of rainfall to exceed 25mm in most parts of the country during the forecast period.

GEFS Week-2 Exceedance Prob. > 50mm
Valid: 20220909 - 20220915

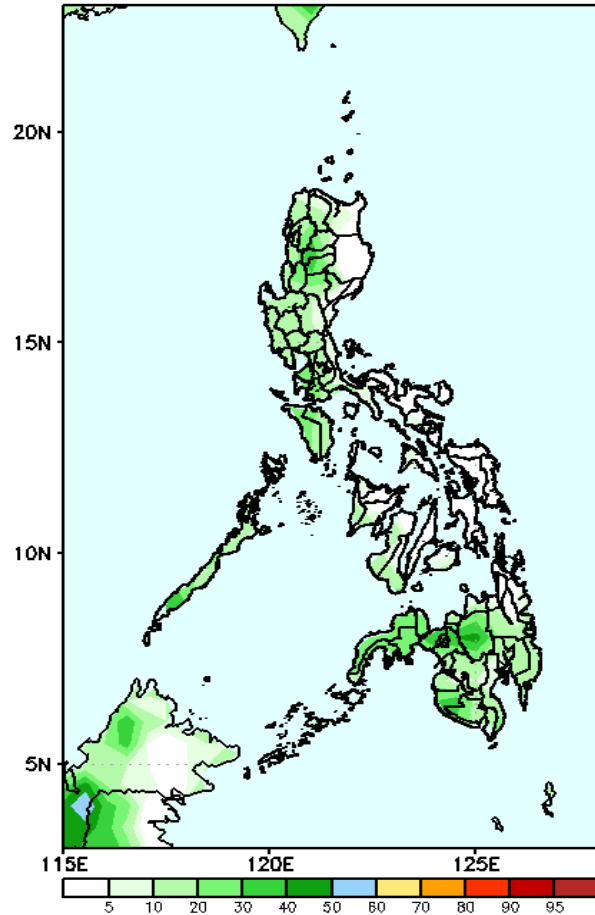


High probability of rainfall to exceed 50mm in most parts of northern Luzon (except in Ilocos Norte, Apayao and Cagayan), Tarlac, Nueva Ecija, Negros Oriental and most parts of Mindanao while less likely for the rest of the country during the forecast period.

Exceedance Probability > 100/150/200 mm

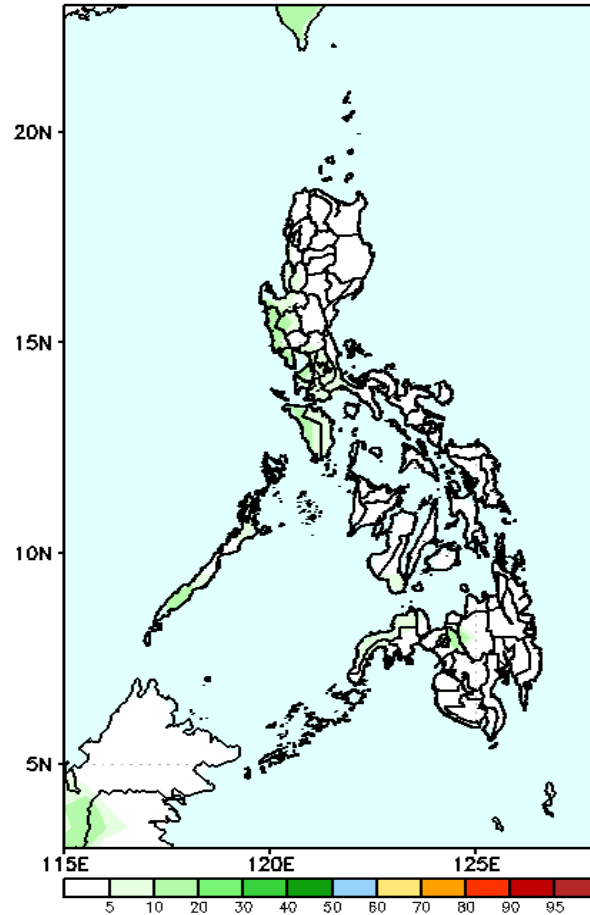
Week 2: Sep 09-15, 2022

GEFS Week-2 Exceedance Prob. > 100mm
Valid: 20220909 - 20220915



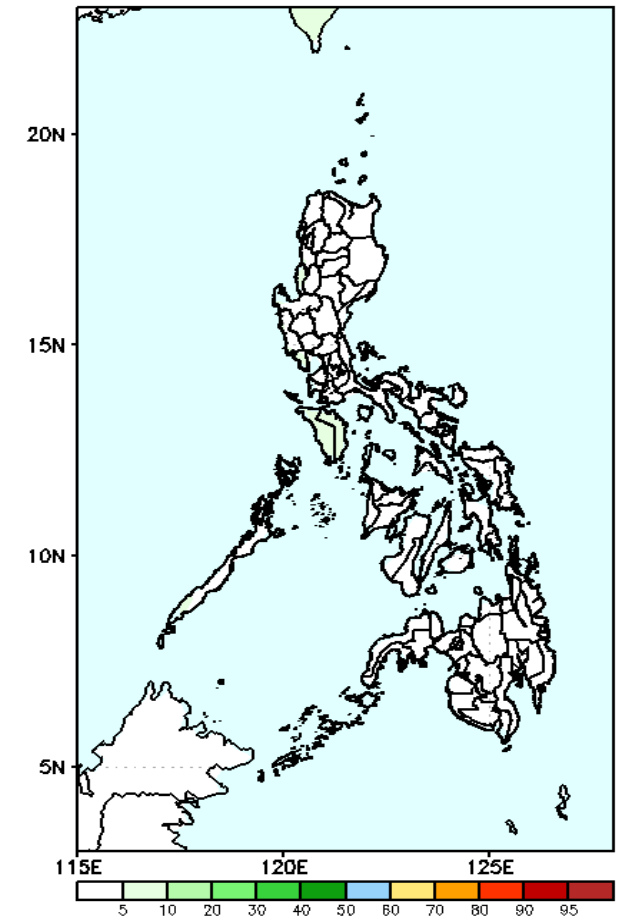
Low probability of rainfall to exceed 100mm in most parts of the country during the forecast period.

GEFS Week-2 Exceedance Prob. > 150mm
Valid: 20220909 - 20220915



Low probability of rainfall to exceed 150mm in most parts of the country during the forecast period.

GEFS Week-2 Exceedance Prob. > 200mm
Valid: 20220909 - 20220915

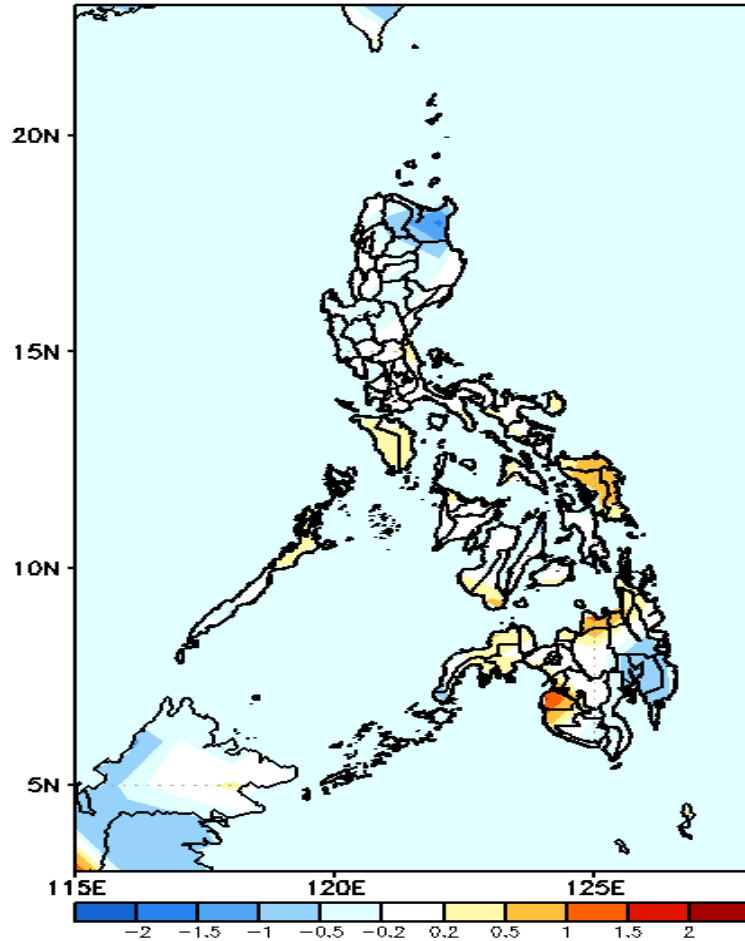


Low probability of rainfall to exceed 200mm in most parts of the country during the forecast period.



GEFS Week-1 & 2 Forecasts: T2m Anomaly

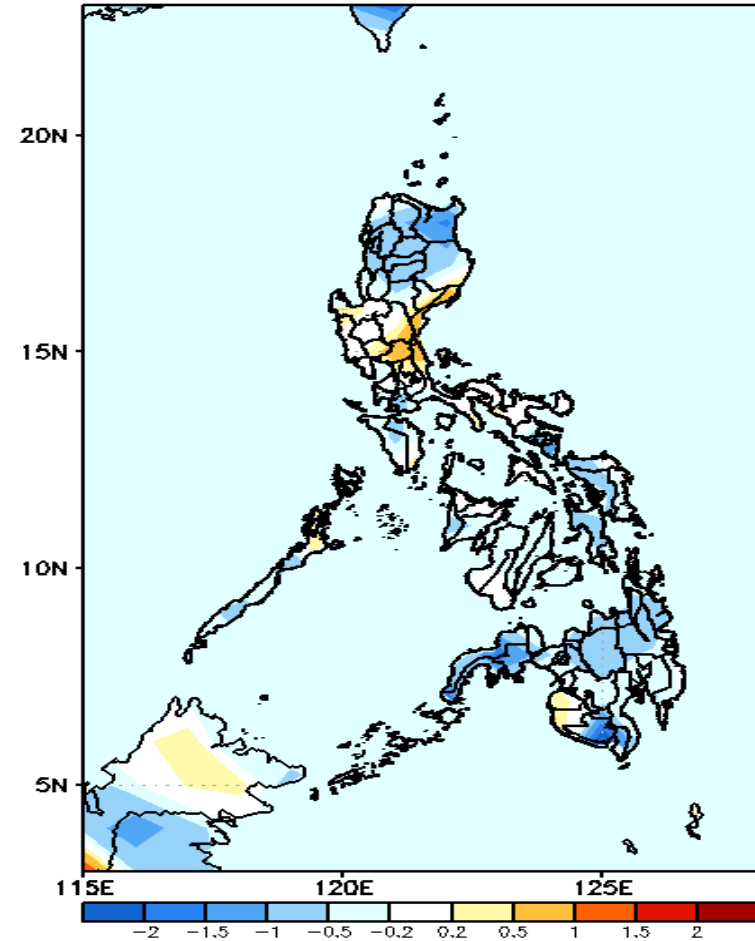
GEFS Week-1 T2m Anomaly
Valid: 20220902 - 20220908



2m Temperature Week 1: Sep 02-08, 2022

Near to slightly warmer than average surface air temperature will likely experience in most parts of the country, warmer in Maguindanao while slightly cooler in Cagayan and Davao Region during the forecast period.

GEFS Week-2 T2m Anomaly
Valid: 20220909 - 20220915



2m Temperature Week 2: Sep 09-15, 2022

Slightly cooler to cooler than average surface air temperature will likely experience in most parts of the country except in eastern parts of Central Luzon where slightly warmer temperature is expected during the forecast period.